

### 描述 / Descriptions

表面贴装肖特基整流二极管，反向电压：40V，正向电流：2.0A，SMA 封装。  
Surface Mount Schottky Barrier Rectifier, Reverse Voltage: 40V, Forward Current: 2.0A ,SMA package.

### 特征 / Features

低功耗，高效率，正向浪涌电流大，适用于低压高频逆变器和极性保护，表面贴装。无卤产品。  
Low power loss, high efficiency, High forward surge current capability, For use in low voltage, high frequency inverters, and polarity protection applications, For surface mounted applications, HF product.

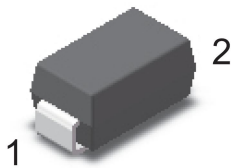
### 用途 / Applications

一般用途。  
General purpose.

### 内部等效电路 / Equivalent Circuit

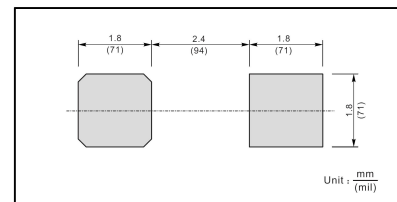


### 引脚排列 / Pinning



| PIN | DESCRIPTION |
|-----|-------------|
| 1   | Cathode     |
| 2   | Anode       |

The recommended mounting pad size



### 印章代码 / Marking

见印章说明。 See Marking Instructions.

**极限参数 / Absolute Maximum Ratings(Ta=25°C)**

| 参数<br>Parameter   | 符号<br>Symbol    | 数值<br>Rating | 单位<br>Unit |
|---|-----------------|--------------|------------|
| Maximum Repetitive Peak Reverse Voltage   | $V_{RRM}$       | 40           | V          |
| Maximum RMS voltage   | $V_{RMS}$       | 28           | V          |
| Maximum DC Blocking Voltage   | $V_{DC}$        | 40           | V          |
| Maximum Average Forward Rectified Current at Tc= 100 °C                           | $I_{F(AV)}$     | 2.0          | A          |
| Peak Forward Surge Current,8.3ms Single Half Sine-wave Superimposed on Rated Load | $I_{FSM}$       | 50           | A          |
| Typical Junction Capacitance <sup>1)</sup>  | $C_i$           | 290          | pF         |
| Typical Thermal Resistance <sup>2)</sup>  | $R_{\theta JA}$ | 70           | °C/W       |
| Operating Junction Temperature Range  | $T_j$           | -55~125      | °C         |
| Storage Temperature Range   | $T_{stg}$       | -55~150      | °C         |

Note:

- 1) Measured at 1 MHz and applied reverse voltage of 4 V D.C
- 2) P.C.B. mounted with 2.0" X 2.0" (5 X 5 cm) copper pad areas.

**电性能参数 / Electrical Characteristics(Ta=25°C)**

| 参数<br>Parameter   | 符号<br>Symbol | 测试条件<br>Test Conditions | 数值<br>Rating | 单位<br>Unit |
|---|--------------|-------------------------|--------------|------------|
| Max Instantaneous Forward Voltage                       | $V_F$        | $I_F=2.0A$              | 0.45         | V          |
| Maximum DC Reverse Current at Rated DC Blocking Voltage | $I_R$        | $T_a=25^\circ C$        | 0.5          | mA         |
|   |              | $T_a=100^\circ C$       | 100          |            |

电参数曲线图 / Electrical Characteristic Curve

Fig.1 Forward Current Derating Curve

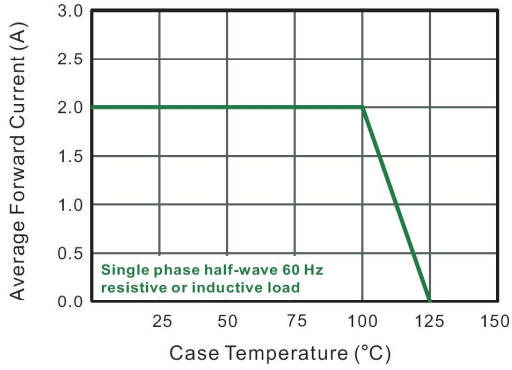


Fig.2 Typical Reverse Characteristics

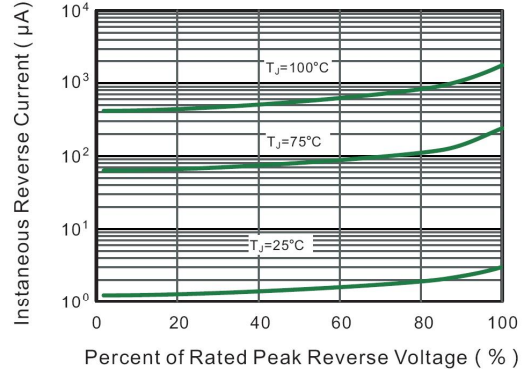


Fig.3 Typical Forward Characteristic

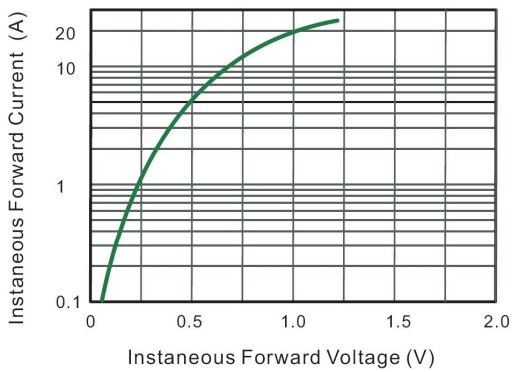


Fig.4 Typical Junction Capacitance

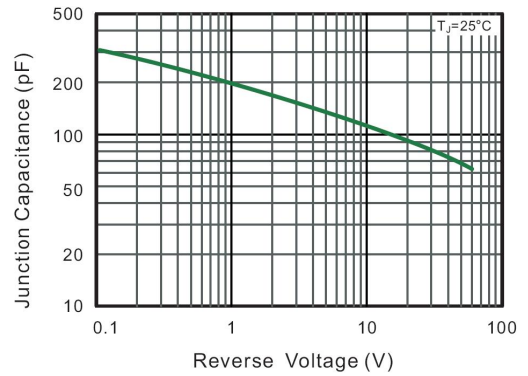


Fig.5 Maximum Non-Repetitive Peak Forward Surge Current

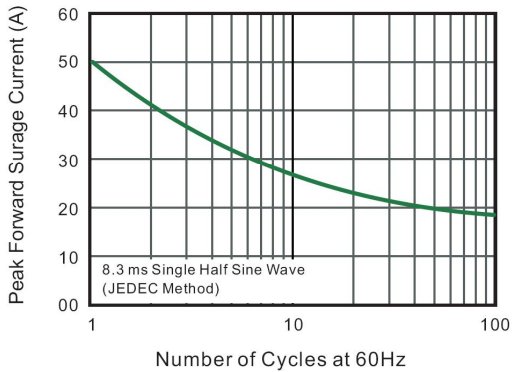
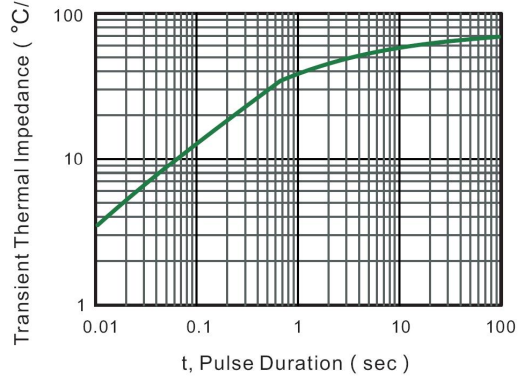
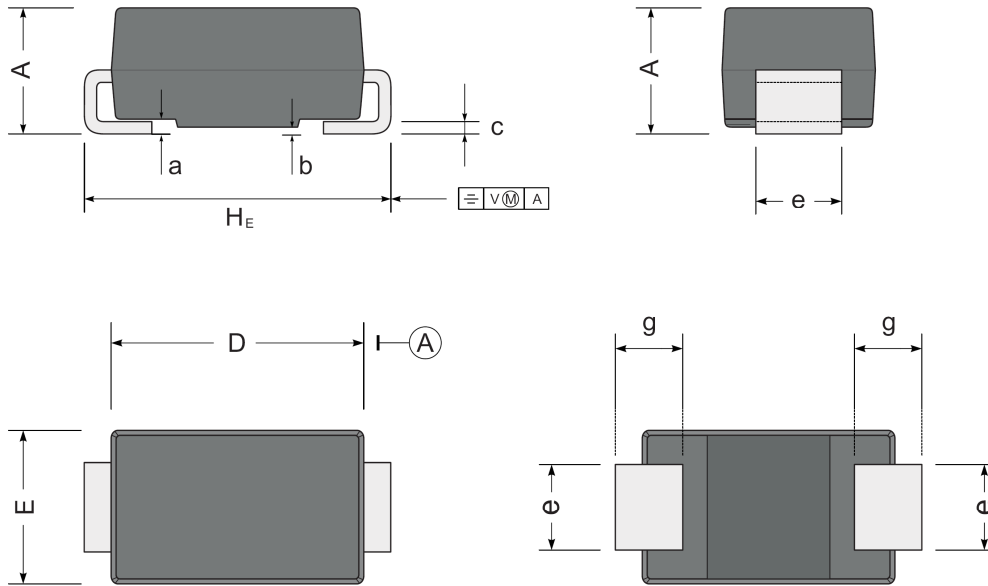


Fig.6 Typical Transient Thermal Impedance



外形尺寸图 / Package Dimensions



| UNIT |     | A   | D   | E   | H <sub>E</sub> | c    | e   | g   | b    | a   |
|------|-----|-----|-----|-----|----------------|------|-----|-----|------|-----|
| mm   | max | 2.2 | 4.5 | 2.7 | 5.2            | 0.31 | 1.6 | 1.5 | 0.2  | 0.3 |
|      | min | 1.9 | 4.0 | 2.3 | 4.7            | 0.15 | 1.3 | 0.9 | 0.05 |     |
| mil  | max | 87  | 181 | 106 | 205            | 12   | 63  | 59  | 7.9  | 12  |
|      | min | 75  | 157 | 91  | 185            | 6    | 51  | 35  | 2    |     |

印章说明 / Marking Instructions



说明：

SSL24：为型号代码

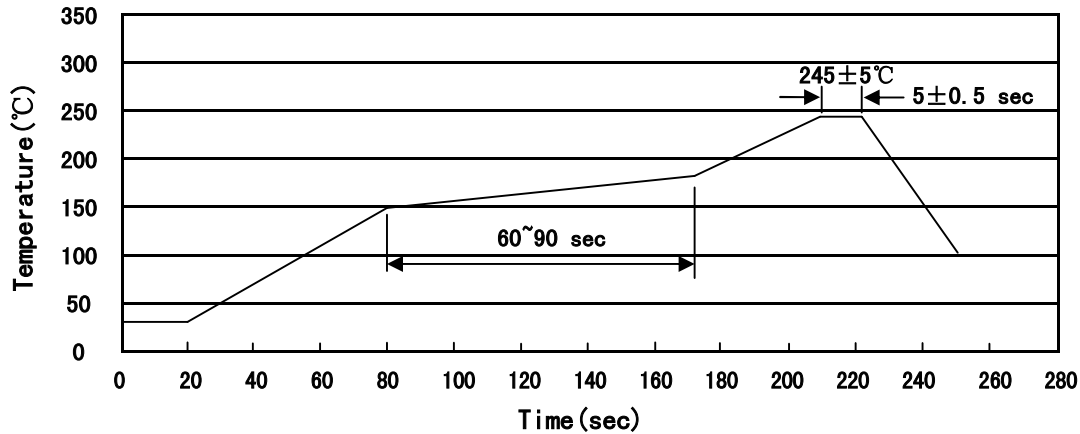
\*\*\*\*：为生产批号追溯码，第1个\*为年月代码，后面3个\*为当月小批号代码

Note:

SSL24：Product Type Code

\*\*\*\*：Lot No. Code ,The 1st \* means:YM Code ,The last 3 \* means:little Lot No Code

**回流焊温度曲线图(无铅) / Temperature Profile for IR Reflow Soldering(Pb-Free)**



说明：

- 1、预热温度 150 ~ 180°C，时间 60 ~ 90sec;
- 2、峰值温度 245±5°C，时间持续为 5±0.5sec;
- 3、焊接制程冷却速度为 2 ~ 10°C/sec.

Note:

- 1.Preheating:150~180°C, Time:60~90sec.
- 2.Peak Temp.:245±5°C, Duration:5±0.5sec.
3. Cooling Speed: 2~10°C/sec.

**耐焊接热试验条件 / Resistance to Soldering Heat Test Conditions**

温度：260±5°C

时间：10±1 sec.

Temp.:260±5°C

Time:10±1 sec

**包装规格 / Packaging SPEC.**

卷盘包装 / REEL

| Package Type<br>封装形式 | Units 包装数量         |                         |                        |                              |                        | Dimension 包装尺寸 (unit: mm <sup>3</sup> ) |             |             |
|----------------------|--------------------|-------------------------|------------------------|------------------------------|------------------------|---|-------------|-------------|
|                      | Units/Reel<br>只/卷盘 | Reels/Inner Box<br>卷盘/盒 | Units/Inner Box<br>只/盒 | Inner Boxes/Outer Box<br>盒/箱 | Units/Outer Box<br>只/箱 | Reel                                    | Inner Box 盒 | Outer Box 箱 |
| SMA                  | 5000               | 2                       | 10000                  | 7                            | 70000                  | 13" ×12                                 | 336X336X40  | 380X335X366 |

**使用说明 / Notices**